

National Highways

March 2025

Ian Doust - Programme Development Manager

**Sam Pinnock – Route Manager Leicestershire
& North-Northamptonshire**

**Fi McKenzie – Route Manager Coventry,
Warwickshire & Worcestershire**



How National Highways Is Funded

Operational Expenditure (Opex)

Opex is the budget for operating and maintaining the network. This budget has to cover everything, including:

- Filling potholes, keeping drains clear, cutting grass, the electricity bill for streetlights, collecting litter
- Customer contact centres, Traffic Officers and Regional Operations Centres
- Staff Costs
- Legal costs and managing claims made against the company
- Total budget for 2020 – 2025: Ca.£5.25bn

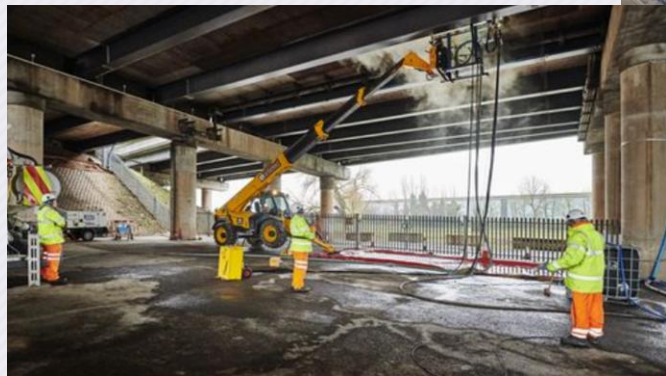
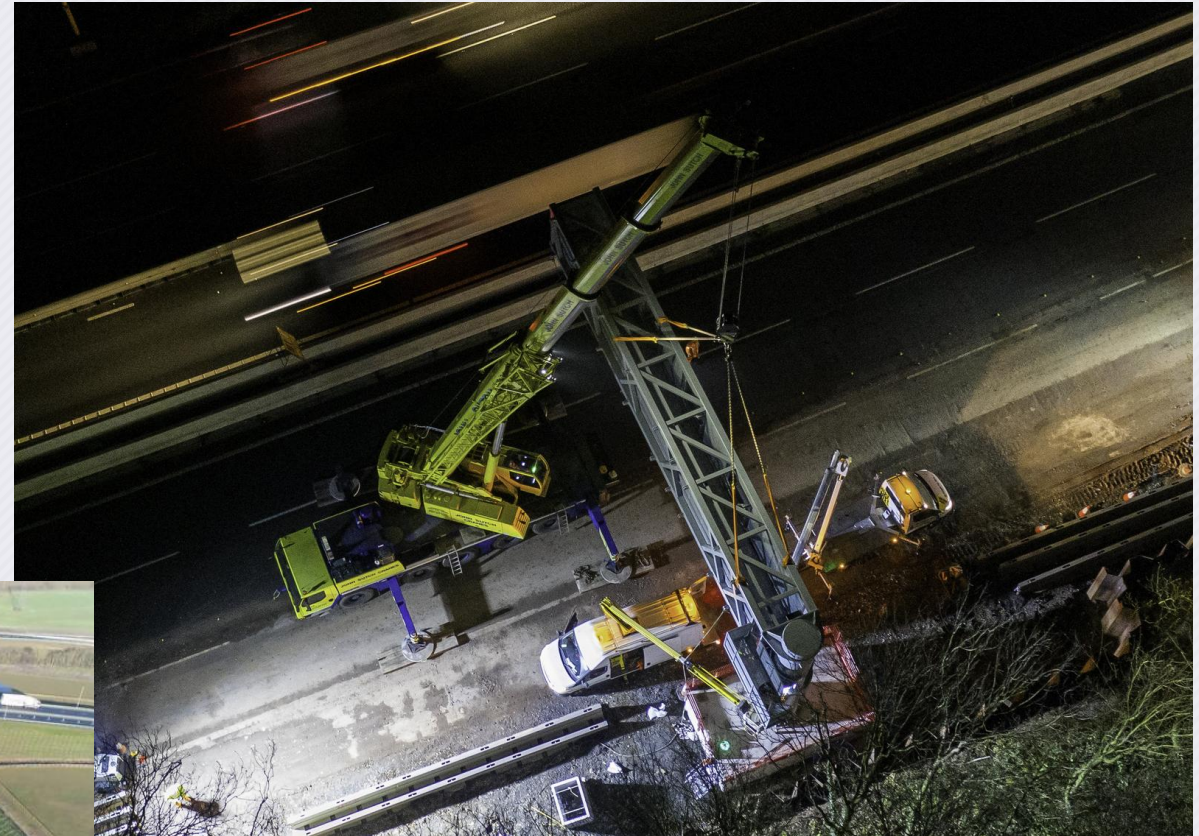


How National Highways Is Funded

Capital Expenditure (Capex)

Capex is our budget for all investment in the SRN. This budget has to stretch a long way to cover:

- Major enhancement/improvement schemes £14bn
- Renewing an aging network £4.1bn
- Minor enhancements (Designated Funds) £936m
- Studies and design for future RIS schemes £347m
- Total Budget for 2020 – 2025: Ca.£19bn



Litter

Litter is a serious issue. It harms the environment, upsets our customers and damages our reputation. It also puts our people at risk when they have to collect it and it diverts time and money that's better spent on improving the road network.

We are responsible for litter collection on motorways e.g. M42 and M40. Local authorities manage litter collection on the rest of the roads in England including the A46.

We offer opportunities to share our traffic management with local authorities whenever possible, however most of our closures are at night, and can be challenging for councils to resource.



Drainage

In Oct 2023 we experienced flooding on the A46 between Shottery and Oversley Mill in several spots. Our teams were despatched and worked overnight to identify the issues and clear the water. As a result, the drains and gullies were scheduled for additional maintenance, and we've not experienced a repeat of the issues we saw.



A46- Warwickshire Safety Scheme

Collision analysis across the region identified the A46 between Oversley Mill and Snitterfield has an above-average collision rate, particularly involving:

- Drivers losing control of their vehicle at bends.
- Driver behaviour.

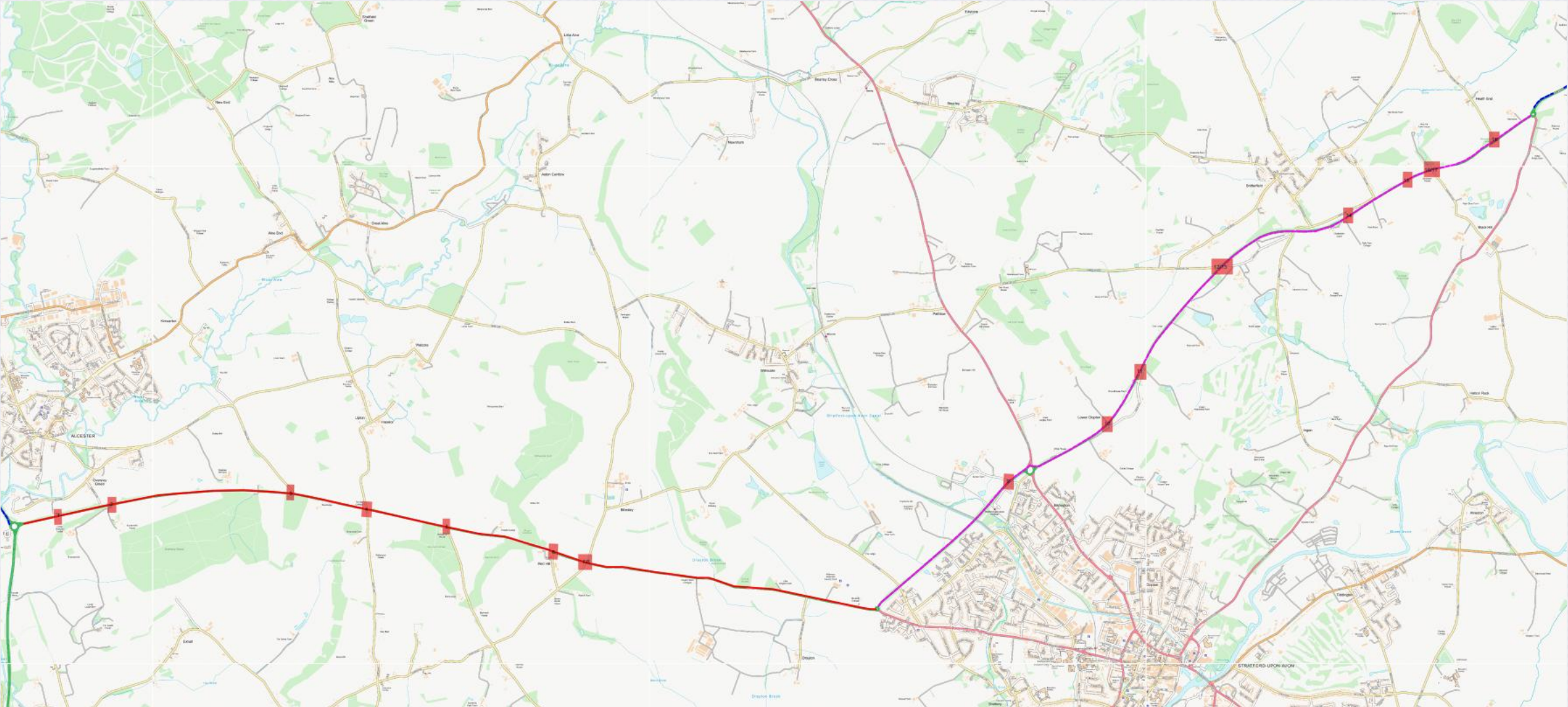
Safety improvements on 7 bends and 18 junctions to include:

- Refreshed road surface and markings,
- New hazard signs
- New bollards highlighting bends to drivers on approach
- 50 new direction signs on posts designed to crumple if hit

Work is due to complete by the end of March.



A46- Warwickshire Safety Scheme



A46 Third Party schemes

There are developers currently planning to deliver improvements to the A46 to enable growth in the area. Latest expected timeframes subject to the developers booking roadspace.

- Drayton Manor Drive Nr Wildmoor (Bannatyne Health club) ongoing to Summer 27
- Billesley Crossroads – Summer 25 to Spring 26
- Shottery link -Bloor Homes – Summer 25 to Summer 26

Warwickshire CC scheme

- Stoneleigh junction improvements - completion early 2026.



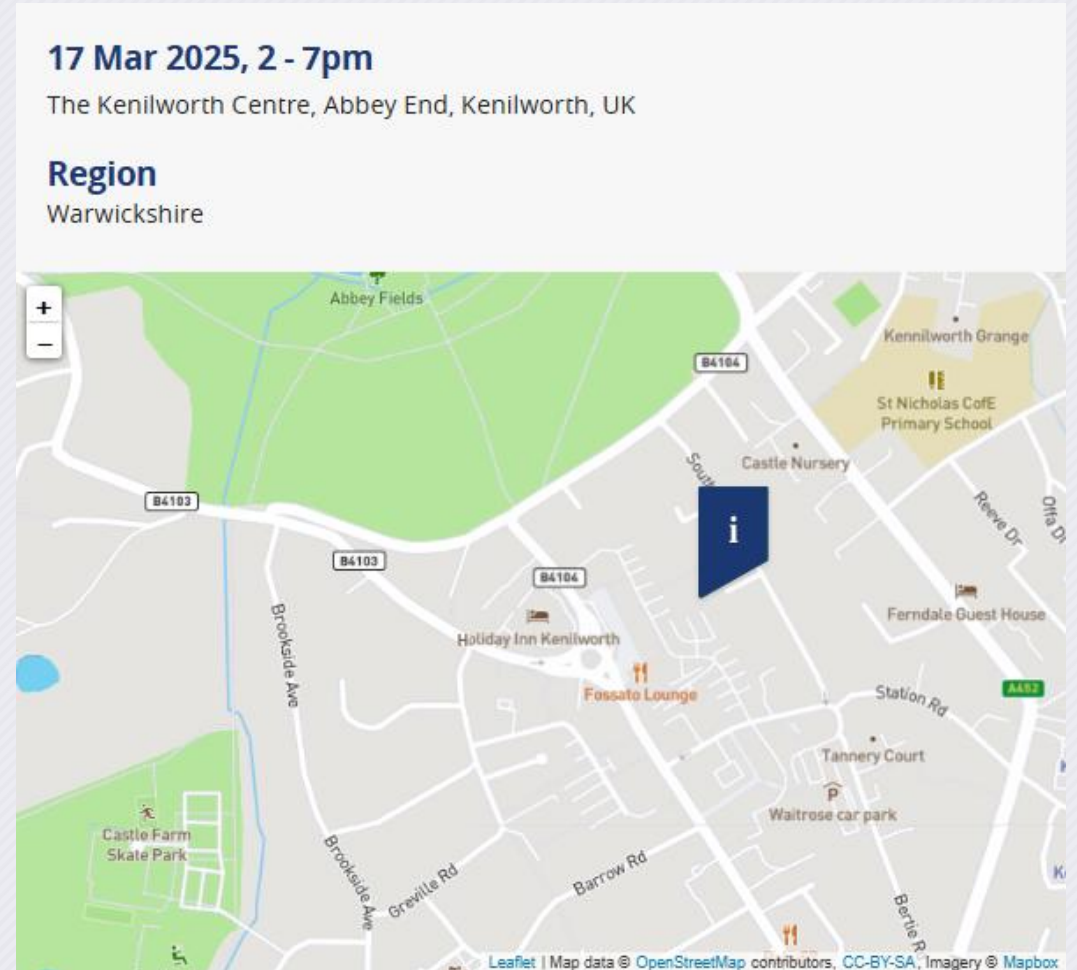
HS2 & BBV Drop in: Final Phase A46 Works

HS2 & BBV would like to invite you to a drop-in for an update on the A46 works at The Kenilworth Centre.

They will be holding an informal drop-in event at The Kenilworth Centre where you can come and chat to the team about upcoming work, with a focus on the final phase of the A46 box slide. Come and talk to us on **Monday 17 March 2025** any time **between 2pm and 7pm.**

They will have specialists attending to answer your questions about the final A46 works.

[Book Via Eventbrite](#)



**Questions?
Comments?
Ideas?**

Ian Doust

Programme Development Manager
Midlands Operations

Fiona McKenzie

Route Manager
Midlands Operations

Customer Contact Centre

0300 123 5000

info@nationalhighways.co.uk